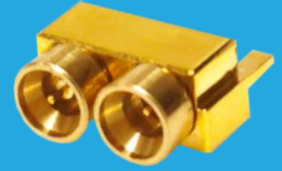


QC-2-MB-01

DC~67GHz, SSMP Male

Features:
* Low VSWR

Applications:
* Wireless
* Radar
* Instruments
* Electronics



Electrical

Frequency: DC~67GHz
VSWR: 1.25 typ. @DC~40GHz
Impedance: 50Ω

Mechanical

Outer Conductor: Gold plated brass
Dielectric: PEEK
Inner Conductor: Gold plated brass
Connector*1: SSMP male
Detent Mode: Full detent

[1] Mateable with GPPO, SMPM & Mini-SMP.

Environmental

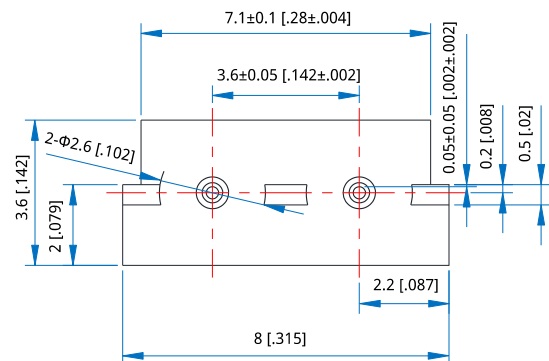
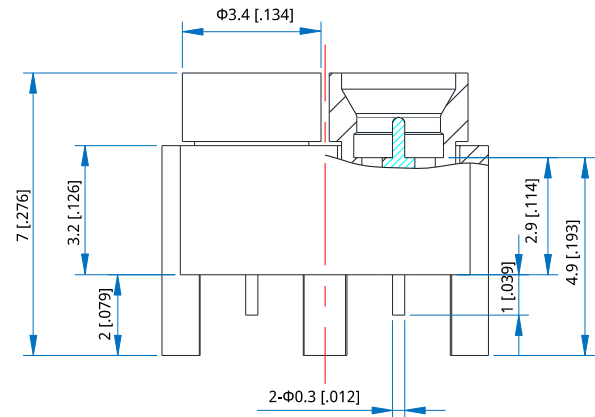
Temperature: -55~+155°C

How To Order

QC-2-MB-01

Customization is available upon request.

Outline Drawings



Unit: mm [in]
Tolerance: ±0.2mm [±0.008in]